

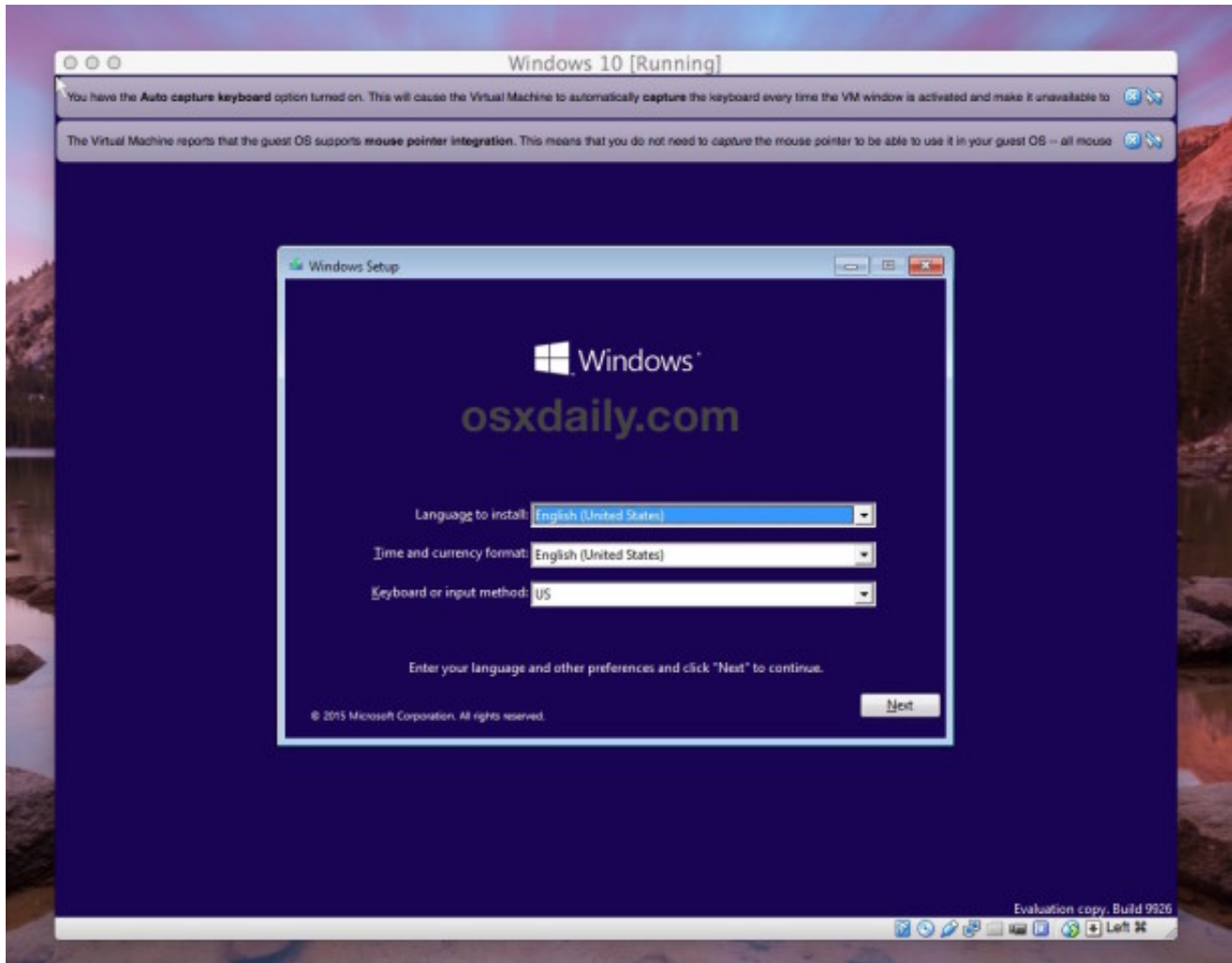


DOWNLOAD



DOWNLOAD

[Install Airflow On Windows](#)



[Install Airflow On Windows](#)



DOWNLOAD



DOWNLOAD

In this article, we will see how to install TensorFlow on a Windows machine TensorFlow Installation Types.

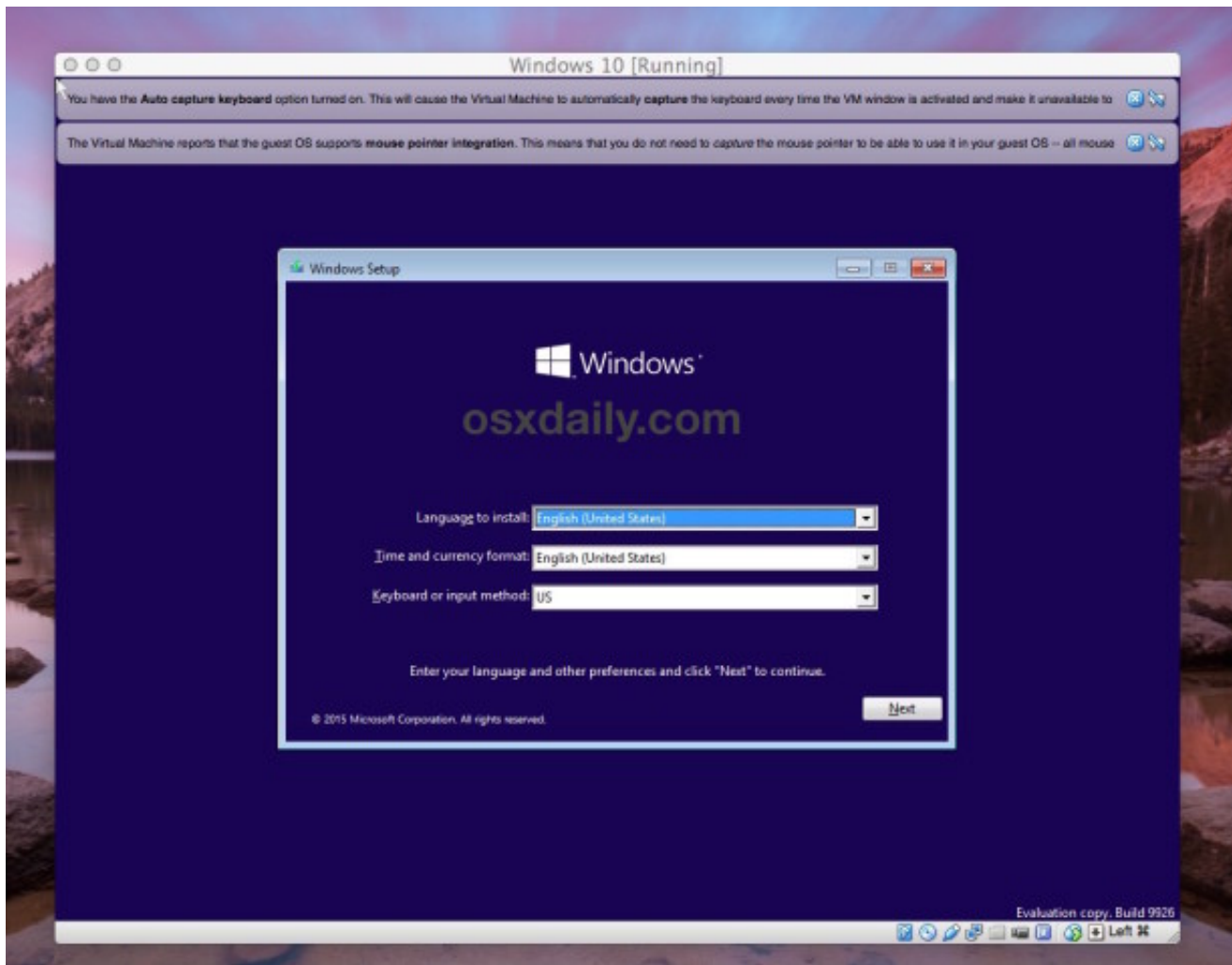
1. [install airflow windows](#)
2. [install airflow windows docker](#)
3. [pip install airflow windows](#)

When installing TensorFlow, you can choose either the CPU-only or GPU-supported version.. Therefore, it is rather easy to build complex structures and extend the flows Navigate to your AIRFLOWHOME -path which is by default a folder called airflow in your root directory.. If you are just interested in the technical part and therefore do not want to read the first one, but still want a recap- here is a summary.

install airflow windows

install airflow windows, install airflow windows 10, install airflow windows docker, conda install airflow windows, pip install airflow windows, install airflow on windows without docker, install airflow on windows 7, install apache airflow on windows server, install airflow on windows 10 without docker, install airflow on windows server 2016, install apache airflow windows 10 [Oki Driver For Windows 10](#)

Otherwise, the task would be triggered and always keep asking if it can run and as such it will remain active until it is planned.. The cron notation follows the schema minute - hour - day (of the month) - month - day (of the week), like mi h d m wd. [Test De Wartegg Interpretacion Pdf](#)



[E.W](#)

[Bell Model 4048 Manual High School](#)

install airflow windows docker

[Cpcu 520 Study Guide Pdf](#)

The fact that it should run daily could have also been expressed with `scheduleintervaldaily`.. Install Airflow on Windows + Docker + CentOS Posted on November 7, 2018 by John Humphreys Continuing on my journey; setting up Apache Airflow on Windows directly was a disaster for various reasons. [Download Ati Windows Gamer Edition X64](#)

pip install airflow windows

[Kill App In Mac And Remove From Application](#)

The `scheduleinterval` define the periods when the graph should be executed In the example above, we define that the task should run daily at 12:00 o'clock.. As you might have suspected the argument, `startdate` defines the beginning date of the task.. The answer is using docker with airflow is a lot more complex, than a straight install.. Dec 16, 2019. If you want to change this, edit the environment variable with `export AIRFLOWHOMEyournewpath` and call `airflow version` once again.. I'd recommend to install the CPU version if you need to design and train simple machine learning models, or if you're just starting out.. 7-dev In addition, if your system has a GCC version airflow webserver You can check.. 6-dev If you are running Python 3.7 you should install `python3.7-dev`: `sudo apt-get install python3.7-dev` 0041d406d9 [Dj Starting From Scratch Live](#)

0041d406d9

[Sony Base System Device Driver](#)